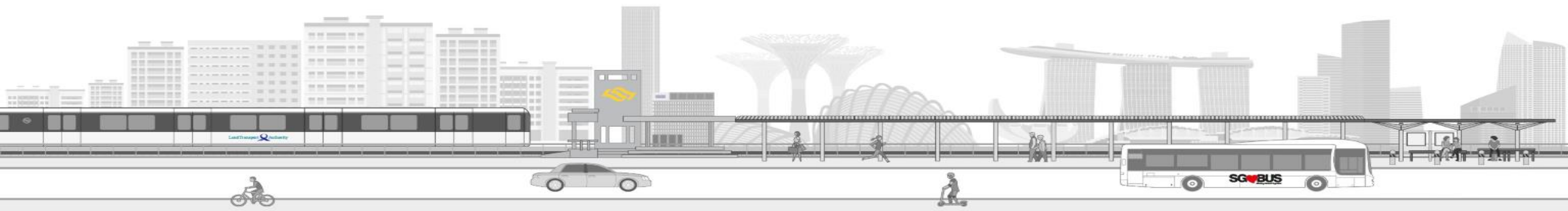


Technical Briefing Chassis & Engine Number Identifier

12 September 2019



Problem statement

To accurately assess **physical** chassis and engine number for the purpose of tampered vehicle investigation (i.e. tampering of chassis and engine number)



Challenge

Currently, there are instances where investigation to **the physical** vehicle chassis and engine number tampering cases are affected as these numbers could not be verified.



Tampered Engine Number
(Grinded Surface)



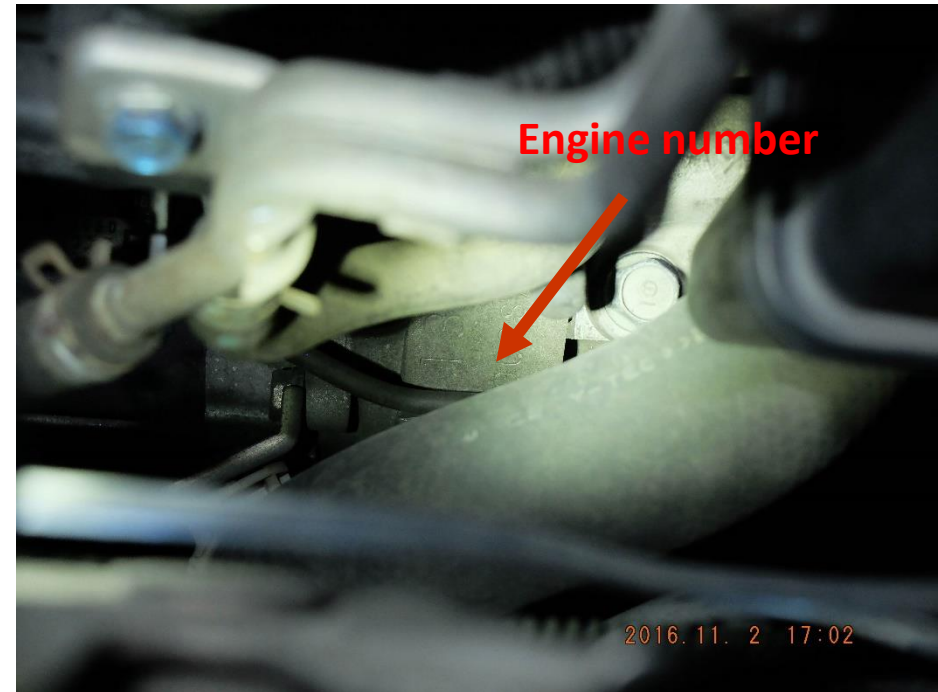
Original Surface



Blocked engine number



Location



Blocked by wiring and pipe



Blocked engine number



Location



Blocked by firewall



Burnt by engine component



Product evaluation criteria

A portable system/device that is able to read **the physical** engine/chassis numbers. Such system shall be compatible with most vehicle models (if not all) in the market.



Evaluation Criterion	Weightage (%)
1. Technical feasibility of solution	30
2. Innovation	20
3. Economic Feasibility and Commercialization Potential (Include development cost and final product cost)	30
4. Capacity and Expertise to Execute Project	20
Total Score	100



END



www.lta.gov.sg



WeKeepYourWorldMoving



LTAsg



LTAsg



LTAsingapore



LTA Singapore

